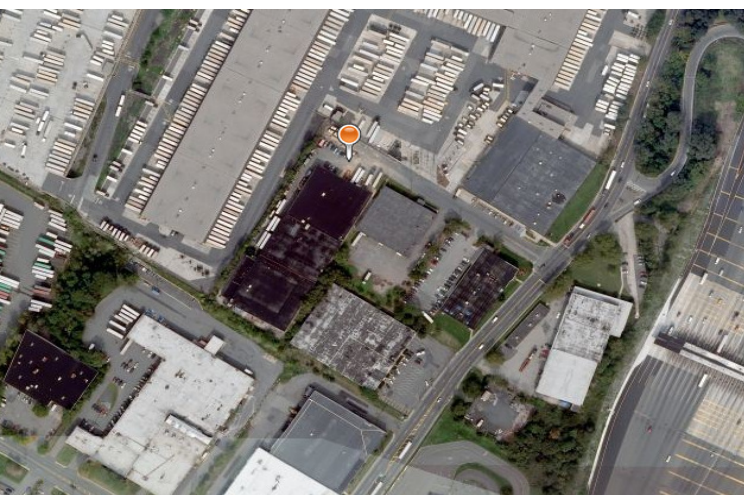
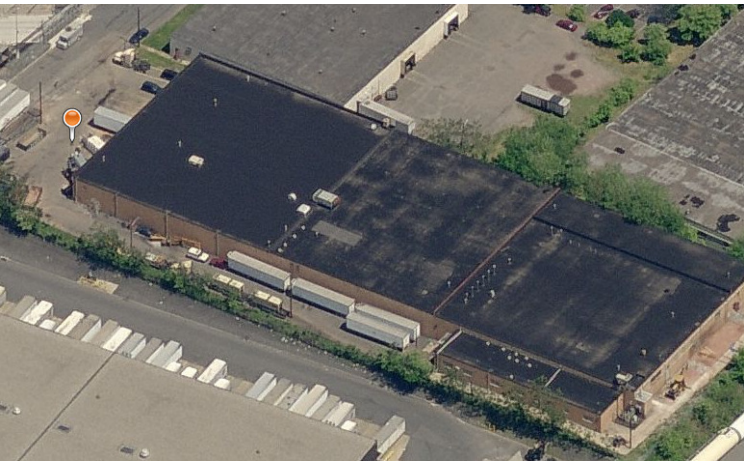


LoanSaleCorporation

9933 E. Bell Rd. #120

Scottsdale AZ 85260

480.664.1919



**AVAILABLE NON-PERFORMING
LOAN \$3,712,691**

**74,364 SF WAREHOUSE
BUILDING IN SECAUCUS, NJ**

The subject loan is a stand alone 74,364 SF warehouse building. Constructed in 1968, the building contains a warehouse, 5 loading docks, a lobby, offices, an employee lounge, and restrooms. The subject collateral recently appraised for \$4.1MM. The note is currently in default

Location: Secaucus, NJ

Current Balance: \$3,712,691

**Request Due Diligence at
info@loansalecorp.com**

www.LoanSaleCorp.com

