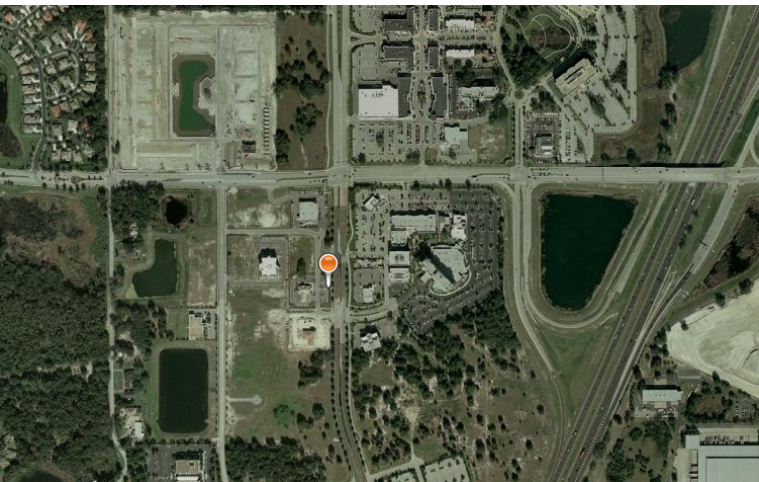


**LoanSaleCorporation**

**9933 E. Bell Rd. #120**

**Scottsdale AZ 85260**

**480.664.1919**



**AVAILABLE NON -PERFORMING  
LOAN \$8,805,808**

**OFFICE BUILDING (36,142 SF)  
IN LAKE MARY, FL**

The subject is an existing office property containing 36,142 square feet of rentable area. The improvements were constructed in 2008. Individual unit sizes range from 1,089 – 14,090 square feet. The site contains 112 parking spaces. Currently the property is 100% vacant. The foreclosure process began in 2010.

**Location: Lake Mary, FL**

**Current Balance: \$8,805,808**

**Request Due Diligence at  
[info@loansalecorp.com](mailto:info@loansalecorp.com)**

**[www.LoanSaleCorp.com](http://www.LoanSaleCorp.com)**

