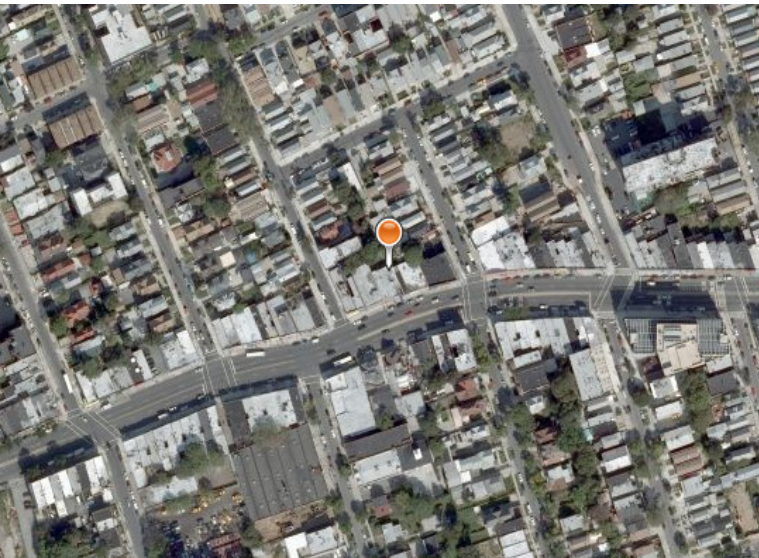


LoanSaleCorporation

9933 E. Bell Rd. #120

Scottsdale AZ 85260

480.664.1919



**AVAILABLE PERFORMING
LOAN \$5,701,060**

**6 STORY RESIDENTIAL AND
COMMERCIAL CONDO
BUILDING IN JAMAICA, NY**

This loan is secured by a 6 story residential and commercial condo building that is currently 98% completed. There will be 30 residential units on floors 2-6 with commercial condo space on the first floor and underground parking. There will be approx. 30,00 SF dedicated to the residential units and 4,500 SF for the ground level commercial. Construction is still underway and there is approx. \$200k left in interest reserve. Currently the loan is performing with a rate of 8.25% and due to mature on 10/1/2010

Location: Jamaica, NY

Current Balance: \$5,701,060

**Request Due Diligence at
info@loansalecorp.com**

www.LoanSaleCorp.com

