

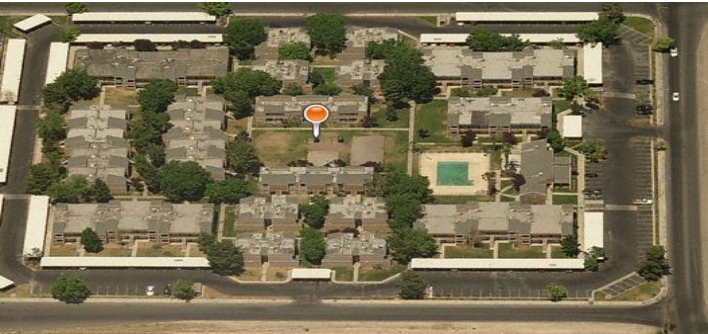
**LoanSaleCorporation**

**9933 E. Bell Rd. #120**

**Scottsdale AZ 85260**

**480.664.1919**

LoanSaleCorp is marketing a group of 4 non-performing multi-family loans with an aggregate balance of \$18.6mm. The Loans are to a single borrower relationship and must be purchased as a group. Please visit our website, [www.LoanSaleCorp.com](http://www.LoanSaleCorp.com), to review more information on these loans or you can reach us at (480) 664-1920.



**NON-PERFORMING MULTI-FAMILY**

**Las Vegas, NV**

**Balance: \$7,999,571**

**Year Built: 1981**

**Number of Units: 220**

**Square Footage: 150,940**



**NON-PERFORMING MULTI-FAMILY**

**Bullhead City, AZ**

**Balance: Tied in to Loan Balance Above**

**Year Built: 1995**

**Number of Units: 51**

**Square Footage: 43,950**



**NON-PERFORMING MULTI-FAMILY**

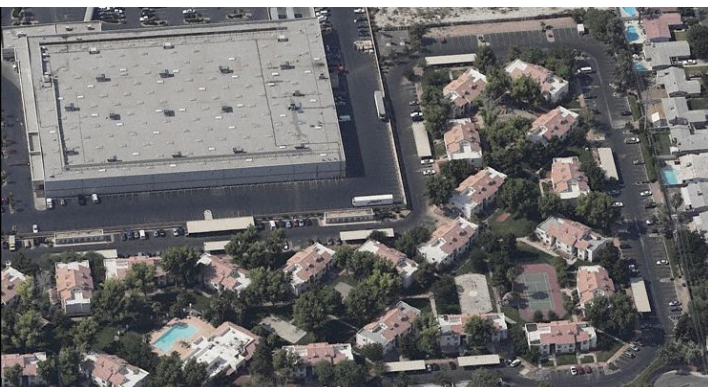
**Phoenix, AZ**

**Balance: \$2,307,511**

**Year Built: 1988**

**Number of Units: 117**

**Square Footage: 91,500**



**NON-PERFORMING MULTI-FAMILY**

**Las Vegas, NV**

**Balance: \$8,329,332**

**Year Built: 1979**

**Number of Units: 264**

**Square Footage: 197,816**